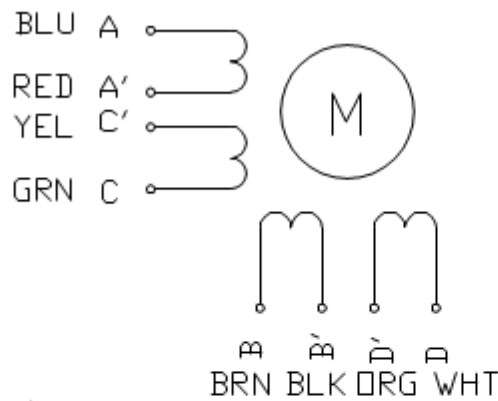


specifications:

PHASE	STEP ANGLE	RATED VOLTAGE	CURRENT /PHASE	RESISTANCE /PHASE	INDUCTANCE /PHASE	HOLDING TORQUE	ROTOR INERTIA	WEIGHT
	DEG/STEP	V	A	ohms	mH	kgf-cm	gcm <sup>2</sup>	Kg
unipolar	1.8	2.8	2.8	1.0	1.6	14	480	1.0
bipolar(s)	1.8	4.0	2.0	2.0	6.4	18.9	480	1.0
bipolar(p)	1.8	2.0	4.0	0.5	1.6	18.9	480	1.0

Wiring Diagram:

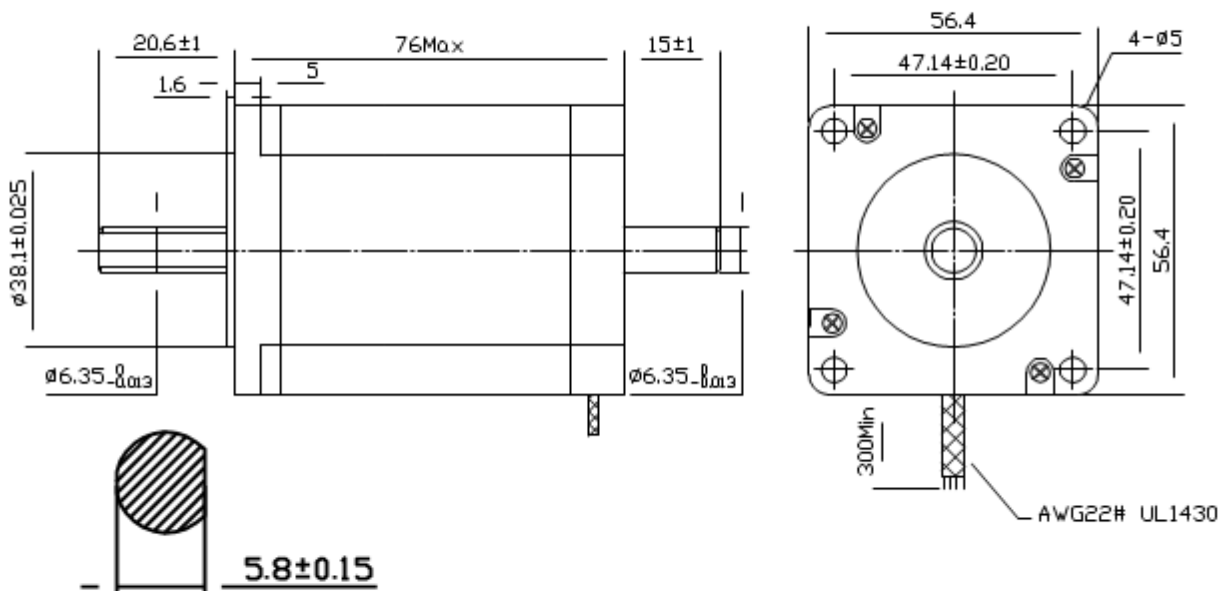


Rotation:

CW DIRECTION	STEP	A C'	C A'	B D'	D B'
↓	1	+		+	
	2		+	+	
	3		+		+
	4	+			+
	1	+		+	

CW direction, see from the shaft end

Dimension:



REV	ECN NO.	DESCRIPTION	DRN	APP D	DATE	DESIGN	DATE	PN.
UNLESS OTHERWISE SPECIFIED TOLERANCES			MATERIAL			CHECK		TITLE
DECIMALS: .X ± 0.5						APPD		Specifications
ANGULAR: .XX ± 0.25						THIRD ANGLE PROJECTION		
.XXX ± 0.1			UNIT: mm			SCALE		M57HS13B
DO NOT SCALE DRAWING						SHEET	OF	DWG NO. REV
						<b>SOPROLEC</b>		