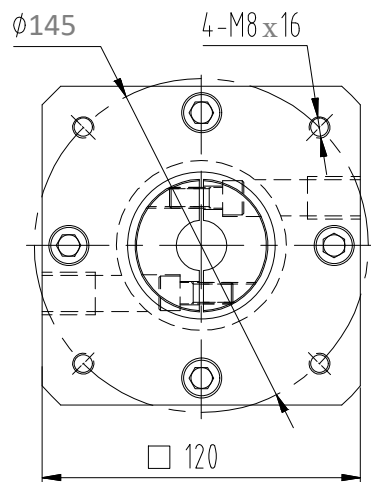
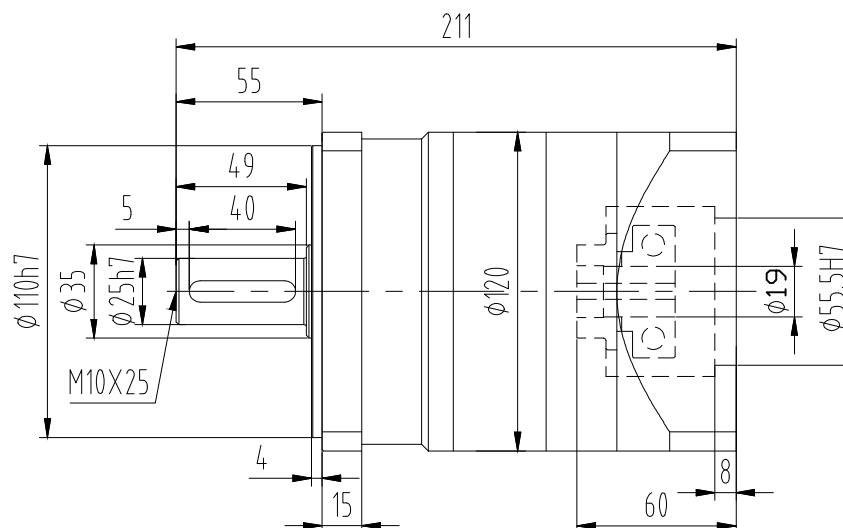
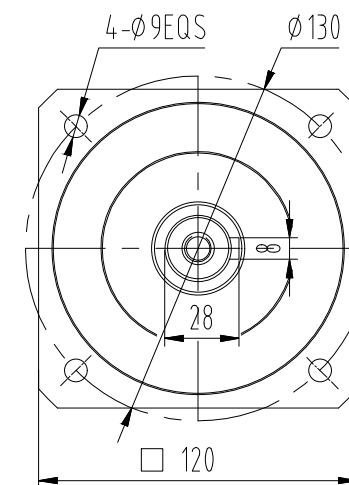


INPUT

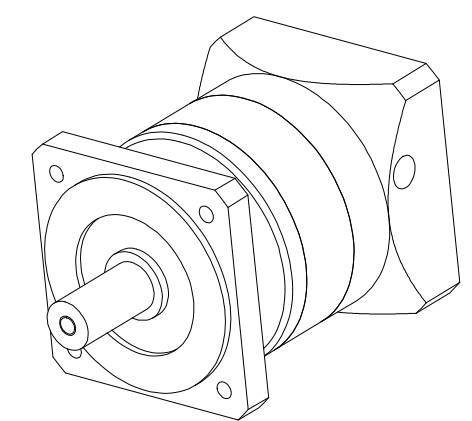


OUTPUT



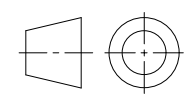
Efficiency: 96%
 Rated speed: 3000RPM
 Lubrication: Fully synthetic grease
 Lifetime: 20000H

Temperature: -25 °C~90 °C
 Maximum speed: 4800RPM
 Weight: 7.2KG
 IP Code: IP65



| | RATIO | 3 | 4 | 5 | 7 | 10 |
|----------------|--------------------|------|------|------|------|------|
| Rate Torque NM | | 148 | 222 | 235 | 158 | 93 |
| Max.Torque NM | 2 TIME RATE TORQUE | | | | | |
| Inertia KGCM² | | 1.65 | 1.22 | 1.15 | 1.13 | 1.11 |
| Radial Force N | 2230 | | | | | |
| Axial Force N | 1550 | | | | | |

| | FDL | | | | |
|--|-----|--|--|--|--|
| | | | | | |
| | | | | | |
| | | | | | |
| | | | | | |



AE-120-xx-S2

