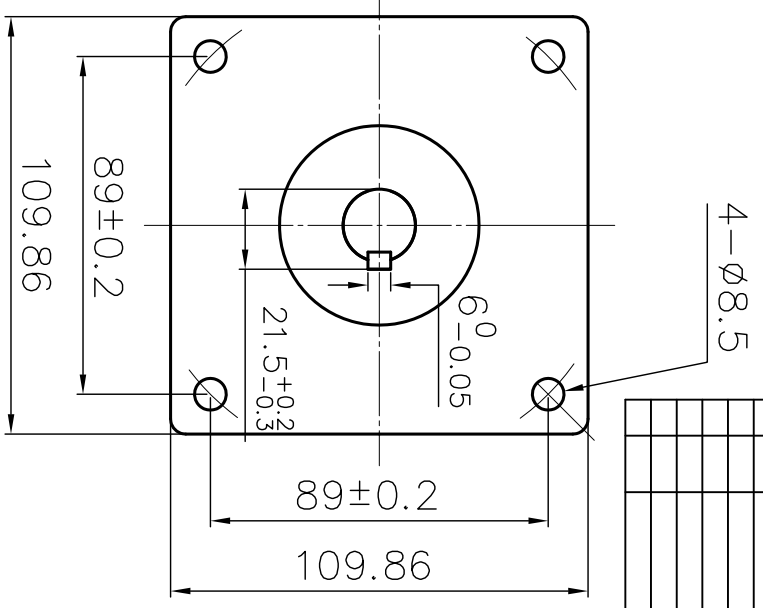
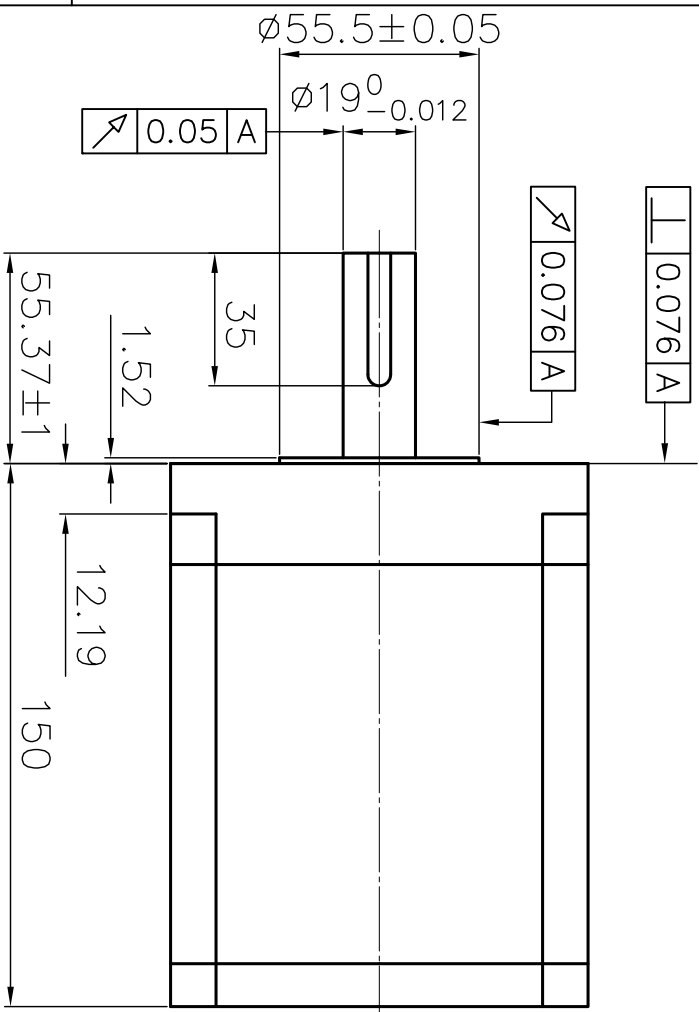


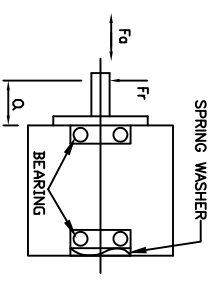
REV	ECN NO.	DESCRIPTION	DRAWN	APP'D	DATE



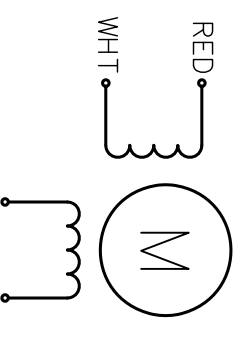
SPECIFICATION

STEP ANGLE	1.8°/full step
STEP ANGLE ACCURACY	±5%
NUMBER OF PHASE	2
RATED VOLTAGE	4.68VDC
RATED CURRENT	6.5A
RESISTANCE/PHASE	0.72±10% ohms@20°C
INDUCTANCE/PHASE	11.5±20% mH@1KHZ
HOLDING TORQUE	21N.m 2 phase on
PULL OUT TORQUE	N.m@ RPM
BACK EMF	V @300RPM
DETENT TORQUE	N.cm
ROTOR INERTIA	5900 g.cm ²
WEIGHT	8.4kg
TEMPERATURE RISE	Less than 80K
SOURCE VOLTAGE	70-180 VAC
INSULATION CLASS	B 130°C
DIELECTRIC STRENGTH	1200VAC 1s
INSULATION RESISTANCE	100MΩm @500VDC
IP CODE	IP30
OPERATION AMBIENT	Ambient temperature:-20...+50°C,humidity Max. 85%(No condensation)
STORAGE AMBIENT	Ambient temperature:-20...+95°C,humidity Max. 85%(No condensation)

PERMISSIBLE RADIAL+AXIAL FORCE



Wiring diagram



FULL STEP, PARALLEL BIPOLAR

CW DIRECTION	STEP	A	C	B	D
↑	1	+			
	2		+	+	
	3				+
	4	+			+
	1	+			

CW, VIEW FROM FRONT SHAFT END

UL1332 18# 310mm

REV	ECN NO.	DESCRIPTION	DRAWN	APP'D	DATE
A					
UNLESS OTHERWISE SPECIFIED		MATERIAL	CONTR.	CHECK	DATE
TOLERANCES:					
DECIMALS:					
.x					
.xxx					
.xxx					
.xxx					
UNIT: mm					
DO NOT SCALE DRAWING					
FIRST ANGLE PROJECTION					
DESIGN					
DATE					
P/N					
TITLE					
Specifications					
USED ON					
M110HS210					
DWG NO.					
REV					
A					
SOPRPLEC					